

# Soak Tank

## Assembly Instructions

855-SOAKTANK [www.soaksystems.com](http://www.soaksystems.com)

1. Open and confirm contents .

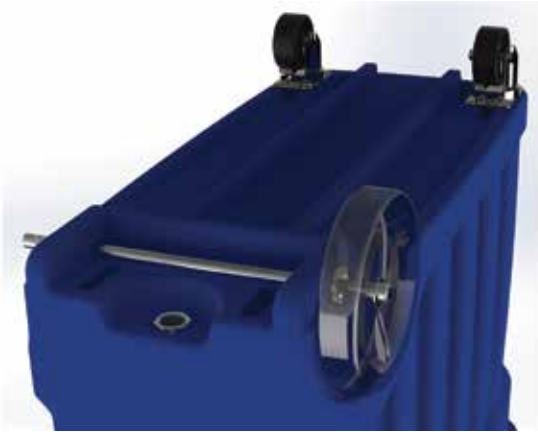


- 1-tank with ribs
- 1-lid
- 1-wire rack
- 1-axel
- 2-large wheels
- 2-large washers
- 2-wheel caps
- 1-valve
- 8-bolts
- 2-casters

2. Remove contents from inside the soak tank. Flip it upside down so that the drain is facing up. Place the caster over the 4 molded in nuts. Align pattern to caster and attach with provided hardware. Requires a 7/16" wrench. Repeat for the other side.



3. Place one wheel cap on an axle end. For this step you will need a mallet or hammer. Next, slide on one wheel (facing out as shown in the picture) followed by a single large washer. With this assembly intact, slide the axle thru the holes on the rear of the tank. Lay the tank on its side that now has one large wheel on.



4. With the axle exposed through the tank, add a large washer and wheel as shown. Now place and knock on the wheel cap. You may need to add a piece of wood or material under the wheel cap on the other side to block up the axle proud enough to get the second wheel cap on.



5. Thread the pre-tyfloned buna drain valve into the stainless steel fitting. This is a very high quality valve but you are threading it into steel - don't over tighten it. Turn blue handle 90 degrees to close valve before filling.



6. Test your fitting for leaks by filling the tank with only water. If you see water droplets forming around the drain threads, tighten it one one more full turn, assuring the drain valve is facing away from the tank as shown. Once tested, the tank is now ready for use.

