



DRIPLoc
GREASE CONTAINMENT SYSTEMS

Grease Containment & Power Washing



PRODUCT CATALOG
877-374-7562

CONTENTS

Page top edge is color coded to Contents

GREASE CONTAINMENT SYSTEMS	Page 4 - 8
REPLACEMENT FILTERS	Page 9-14
STINGERS & PRESSURE WASHING PARTS	Page 15-24
HINGES, HANDLES & ADAPTERS	Page 25-28
GRIPLOC MAGNETS & TOOLS	Page 29-31
SOAK TANK & SOAP	Page 32-33
SPILL PREVENTION & CLEAN-UP	Page 34-35

Thank you for putting your trust in DRIPLOC!

We have over 50 years of combined business experience and we still strive to improve our current products and develop new products that help you get your job done quick, easy, cost effectively and safely.

We want to see you succeed and the best way we know how to do that is to keep providing you with innovative products made from the highest quality materials that last and work hard for you. Our mission is to be a provider of products and business opportunities that help you grow and flourish!



DRIPLOC Multi-Purpose Oil Absorbent 32 LBS BAG



All-natural and non-toxic oil absorbent material is safe, efficient, and great for removing heavy volumes of rooftop grease and oil. With an encapsulating rate of 500% - 600% of its own weight, the material has a much higher absorption capacity than other common absorbents.

SKU	QUANTITY PACKS
FF1300	1, 6, 12, 27, 54, 81

DRIPLOC Multi-Purpose Oil Absorbent 3 LBS BAG



All natural and non-toxic oil absorbent material is safe, efficient, and great for removing heavy volumes of grease, oil and other petroleum based product spills.

SKU	QUANTITY PACKS
FF1400	1, 2, 6, 12

DRIPLOC Oil Only Absorbent Roll Mat - 24" x 150'



Heavy Duty 8 layer polypropylene mat is an excellent choice when replacing sections of Rooftop 360 Systems

- Our most cost-effective absorbent
- 8 layers of thermally bonded, 100% polypropylene
- Dimple pattern speeds wicking for faster, easier cleanup
- Highly absorbent, fine-fiber mat
- Absorbs oil and fuels - NOT water
- Easy-tear perforations

SKU	QUANTITY PACKS
CC2100	1

DRIPLOC Oil Only Poly Boom Filter 5" x 10'



The DRIPLC Oil Only Poly Boom Filter has a strong outer mesh that resists snags, while the inner sleeve is UV resistant up to 12 months. Absorbent boom links together and is great for absorbing low viscosity oil or fuel without absorbing water. Boom will float indefinitely when fully saturated. All booms are non-linting and come complete with end rings and snaps. Boom is 5" in diameter and 10' in length.

SKU	QUANTITY PACKS
CC1825	1, 4, 8



DRIPLLOC high quality oil only absorbent solutions clean up spills on land or in water and are available in pillows, booms, mats and bulk bags.

We use an All-Natural, Non-Toxic oil absorbent material that is safe, efficient and great for cleaning heavy volumes of grease and oil. With an encapsulating rate of 500% to 600% of its own weight, the material has a much higher absorption capacity than other common absorbents.



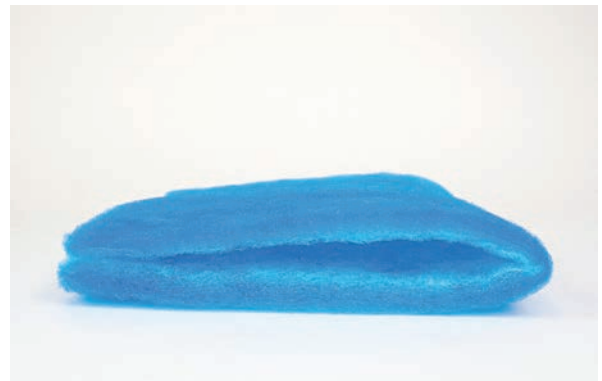
DRIPLLOC Overspray Preventer Reusable Wash Cap



The DRIPLLOC Overspray Preventer was designed to control excess grease overspray during the cleaning of exhaust fans.

Eliminate dirty cleaning water, heavy debris and particulates that normally get sprayed into the air and onto the walls, A/C units and other roof mounted equipment during cleaning.

WASH PADS



Wash Pads are used during exhaust fan cleaning to screen the heavy debris that would normally fall on the rooftop.

Designed for use with the DRIPLLOC 4" & 7" Grease Containment systems

- Wash Pads 15"X 23"
- Wash Pads QTY 40

SKU	QUANTITY PACKS
FF1100	1, 5, 10, 25

SKU	QUANTITY PACKS
FF1200	1



DRIPLOC TRAINING VIDEO LIBRARY

Find DRIPLOC training & product support videos at
www.DRIPLOC.com and our YouTube channel.



Surface Cleaning

Featuring the New
"Stainless Steel Core"
STINGER Swivel on a
Proven Mini Spinner
Platform.



Wash Through

Keep the roof clean
and your time on site
down while giving the
best service around.



Do it right

We are here for
you. We have been
around for a long time
and know how to help
you do the same



Grease Containment Systems

This video shows
you what you need to
do for a new system
install.



Pillow Install

There is more to
installing a pillow than
just tossing on in the
box. This video shows
you how to do it right.



Fan Access Port

This video
demonstrates how
easy it is to install
an access port



T-Nozzle

This video shows
you the best ways to
clean and the best
products to use.

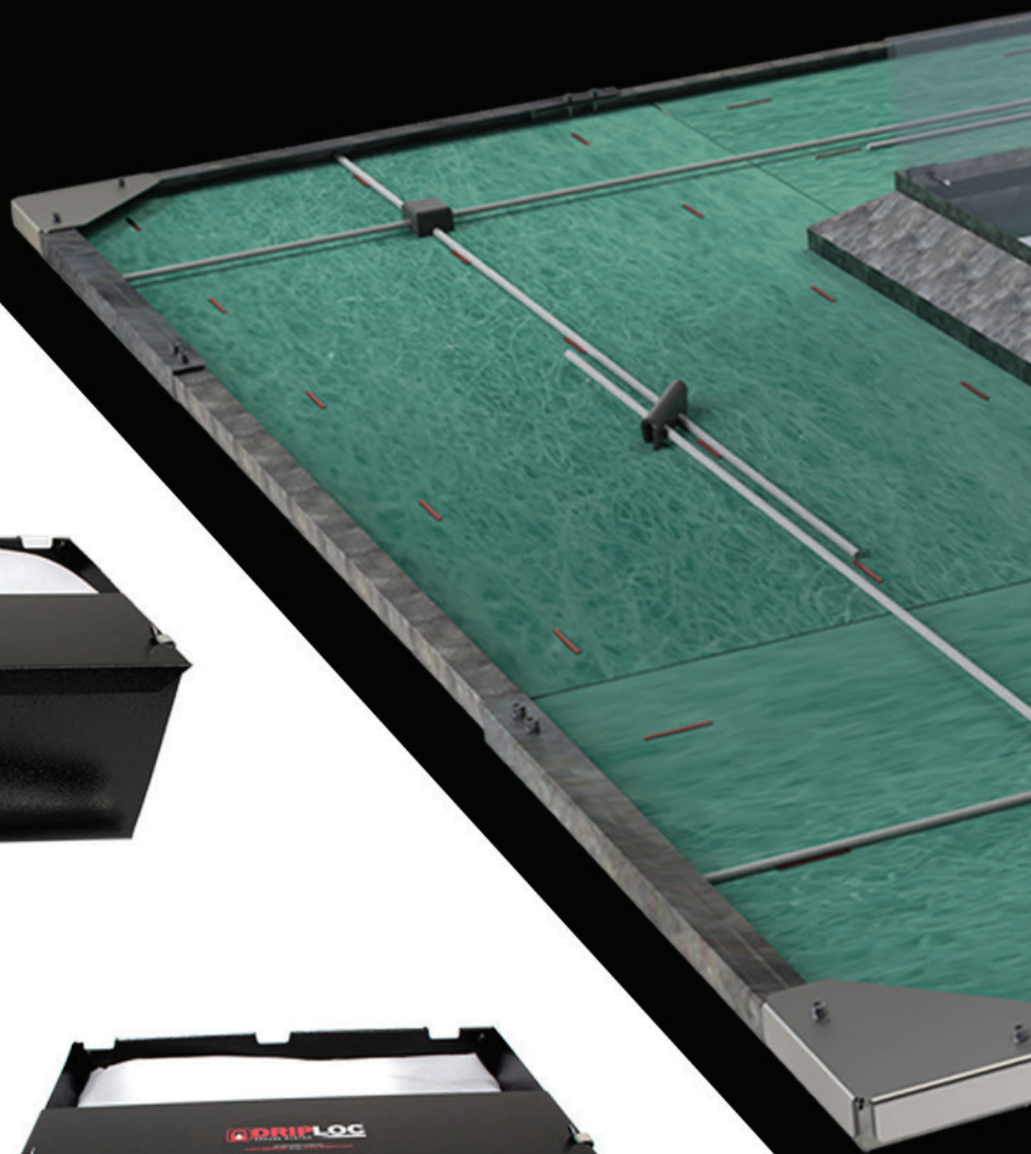
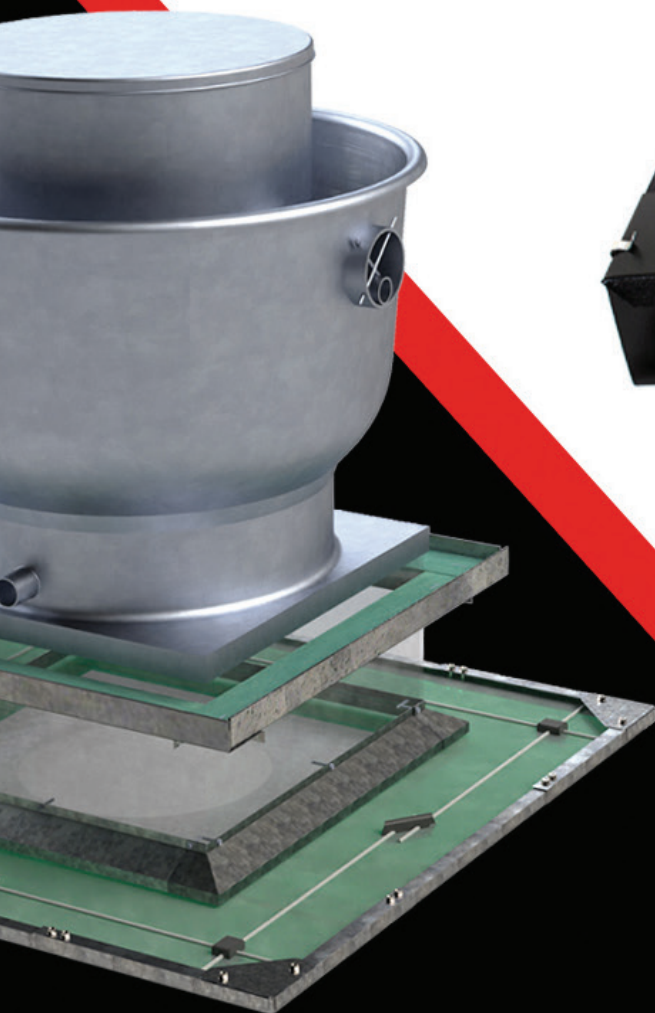
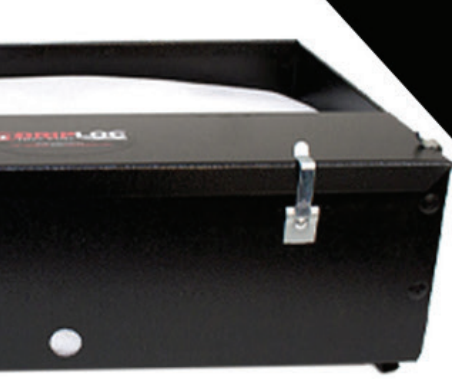


Hinges

This video show
you the proper way
to install a set of
our American Made
Hinges.

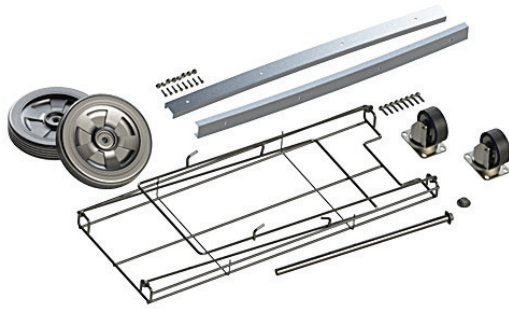
Our on-line videos offer the support and training you need to install and service our products. Of course you can always call us during regular business hours for any questions you might have.

Grease Containment





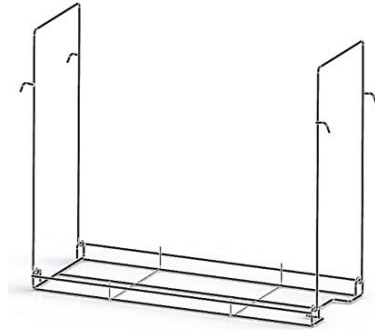
SOAK TANK REBUILD KIT



Includes front-casters, rear-wheels and axle with hardware. Also, includes the dip rack and side rails.

SKU	QUANTITY PACKS
QQ1650	1

SOAK TANK STAINLESS STEEL DIP RACK



Soak Systems Soak Tank dip rack is made to hold kitchen cookware ranging from sheet pans to exhaust fan hood filters. It's made of stainless steel and fits the Soak Sytems brand soak tank.

SKU	QUANTITY PACKS
QQ1655	1

SOAK TANK REPLACEMENT WHEEL KIT



The DRIPLOC Soak Tank Replacement Wheel Kit comes with both front casters and rear wheels for those who are simply needing to replace wheels and not an entire tank.

SKU	QUANTITY PACKS
QQ1660	1

SOAK TANK DRAIN VALVE 3/4" M X 3/4" F



The Soak Tank Drain Valve is a 3/4 Male NPT x 3/4 Female NPT high-quality polypropylene 2-way valve with a Teflon Outlet seal and a Buna inlet seal. This valve is an excellent option where chemical resistance is needed.

SKU	QUANTITY PACKS
QQ1665	1



DRIPLOC SOAK TANKS



Soak Tanks are a perfect solution for tackling all those “Hard To Clean” items in a commercial kitchen.

The tanks include a stainless steel “touchless immersion” rack making cleaning products easy and safe. The tank includes anodized aluminum support bars, a heavy-duty rear axle and commercial casters with non-marking wheels to ensure your kitchen floors stay clean. The tank also has a fast-flush recessed drain valve, which makes for cleaning the tank that much easier.

The Soak Tank is designed to withstand the rough handling of a commercial food service environment. It is molded from Polyethylene and has a wall thickness of 1/4" for long term strength and durability.



SOAK TANK “WHITE OR BLUE”



Soak Tanks are perfect for tackling hard to clean items in commercial kitchen.

- Touchless-Immersion rack makes cleaning products safe
- Easy to use
- Commercial casters w/ non-marking wheels
- Fast-flush drain for easier tank cleaning
- Rugged Polyethylene for strength and durability
- Inside dimensions – 12" wide x 31" long x 23" deep
- Overall size is 33.5" long x 28.5" high x 16.25" wide & weighs 42 lbs

RESIDENTIAL SHIPPING SURCHARGE

SKU	QUANTITY PACKS
QQ1100	1, 2, 6, 12

DRIPLOC DSC 7LB. CONCENTRATE POWDER



DRIPLOC DSC Concentrate Powder is a unique, formula that targets your toughest food soils, baked-on grease, and hard to clean areas on your equipment. The concentrate is stainless steel and aluminum safe.

SKU	QUANTITY PACKS
QQ1600	1, 2, 3, 6, 12, 24, 48



DRIPLOC LOW VOLUME GREASE CONTAINMENT SYSTEM



Cost-effective grease containment solution for low volume applications.

- Easy install
- Cost effective
- Includes grease filtering pillow
- Size 4" x 18" x 6"

SKU	QUANTITY PACKS
BB1100	1, 2, 4, 8, 24, 48

DRIPLOC 4" GREASE CONTAINMENT SYSTEM



The 4 inch Rack Grease Containment System is perfect for most standard volume exhaust fans.

- Versatile, fits most fans
- Easy install
- Budget friendly
- Includes grease filtering pillow
- Size 18" x 12" x 4"

SKU	QUANTITY PACKS
BB1200	1, 2, 4, 8, 12, 24

DRIPLOC 7" GREASE CONTAINMENT SYSTEM



The 7 inch Grease Containment System is designed for high-volume of grease output.

- Versatile system fits most any fan
- Easy to install
- (2) absorbent pillows included
- Size 18" x 12" x 7"

SKU	QUANTITY PACKS
BB1300	1, 2, 4, 8, 12, 24

DRIPLOC SUPREME GREASE CONTAINMENT SYSTEM



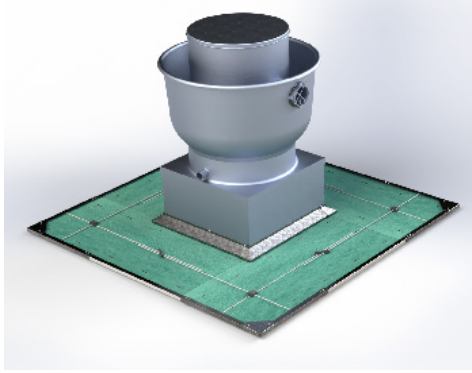
The Supreme Box System is designed for exhaust fans with extreme grease output.

- Twice the oil absorbent capacity of 7" system
- Designed to sit directly on the rooftop
- Includes (2) Supreme grease filtering pillows
- Deflector shield and hardware included
- Size 24" x 17" x 7"

SKU	QUANTITY PACKS
BB1400	1, 2, 3, 8



DRIPLOC RT 360 Grease Containment System 24" Model 4424 / 3-34



- Simple expandable Flex-Frame design
- Fits curbs ranging from 3"- 34" in diameter
- Provides 24" of rooftop surface protection around the fan
- Includes 4 - 24" X 58" filters
- All install hardware included
- 1 - Fire Retardant Layer
- 4 - Oil Absorbing Layers

RESIDENTIAL SHIPPING SURCHARGE

SKU	QUANTITY PACKS
BB1500	1, 2, 3, 4

DRIPLOC RT 360 Grease Containment System 12" Model 4412 / 27-65



- Simple expandable Flex-Frame design
- Fits curbs ranging from 27"- 65" in diameter
- Provides 12" of rooftop surface protection around the fan
- Includes 8 - 24" X 58" filters
- All install hardware included
- 1 - Fire Retardant Layer
- 4 - Oil Absorbing Layers

RESIDENTIAL SHIPPING SURCHARGE

SKU	QUANTITY PACKS
BB1550	1, 2, 3, 4

DRIPLOC RT 360 Grease Containment System 12" Model 3312 / 16-41

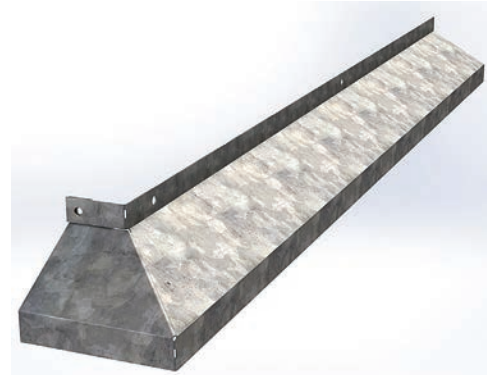


- Simple expandable Flex-Frame design
- Fits curbs ranging from 16"- 41" in diameter
- Provides 12" of rooftop surface protection around the fan
- Includes 8 - 24" X 58" filters
- All install hardware included
- 1 - Fire Retardant Layer
- 4 - Oil Absorbing Layers

RESIDENTIAL SHIPPING SURCHARGE

SKU	QUANTITY PACKS
BB1575	1, 2, 3, 4

DRIPLOC 360 DEFLECTOR SYSTEM KIT



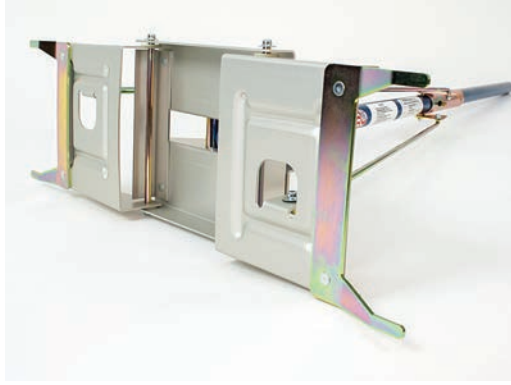
The DRIPLOC 360 DEFLECTOR SYSTEM is the perfect solution to direct all the dripping oils into Rooftop Grease Containment System. Use in conjunction with any of the DRIPLOC Rt 360 systems. Great after-market solution for other OEM products as well as in-house maintenance systems.

System comes complete with all components and hardware to install on exhaust fan curbs ranging from 12" - 43".

SKU	QUANTITY PACKS
BB1595	1, 2, 6



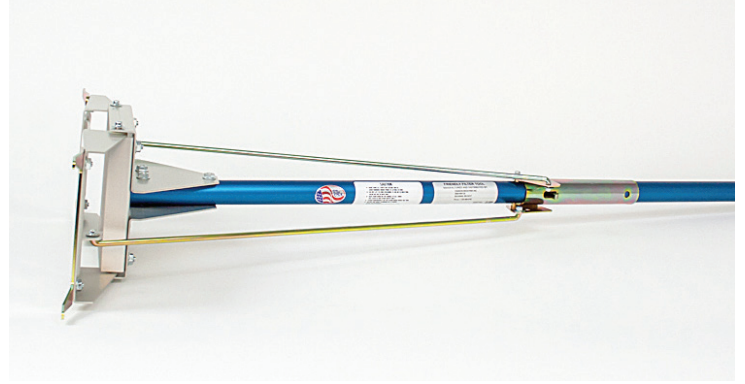
GRIPLOC HOOD FILTER TOOL 16"



- Patented "Clamp and Lock" Design secures filter for easy removal
- Eliminates need to crawl, climb or hover over hot unstable cooking equipment
- Helps Eliminate sheet metal cuts and burns
- ST1600 Fits 16" Filters

SKU	QUANTITY PACKS
NN1400	1

GRIPLOC HOOD FILTER TOOL 20"



- Patented "Clamp and Lock" Design secures filter for easy removal
- Eliminates need to crawl, climb or hover over hot unstable cooking equipment
- Helps Eliminate sheet metal cuts and burns
- ST2000 Fits 20" Filters

SKU	QUANTITY PACKS
NN1450	1

Screws - Self Tapping 3/8" X 1.5" (100 Per Bag)



Self Tapping Screws 3/8" X 1.5"

SKU	QUANTITY PACKS
NN1500	1

GOODYEAR HOSE 1.25" X 3'



The Good Year 1.25" EPDM Service Hose is a versatile general-purpose rubber hose. Reinforced with 2-spiral high tensile textile cord, this tubing has excellent coupling retention and kink resistance.

SKU	QUANTITY PACKS
NN1550	1



GRIPLOC SUPER Magnet Each Pair Includes 1 Pos & 1 Neg Magnet



Each pair consists of one “positive” and one “negative” magnetic pole facing outward so the pair snaps together.

These magnets have approximately 75 lbs of pull force, making them powerful enough to pull through stainless steel hoods when used as a pair.

SKU	QUANTITY PACKS
NN1100	1, 2, 4, 8, 12



Use GRIPLOC SUPER Magnets as a “Second Pair of Hands” during hood cleaning. Once you own a pair you’ll wonder how you ever got by without them.

These magnets have many uses including hanging plastic from drop ceiling grids and securing plastic to cooking equipment just to name a few.

Definitely an investment tool! They will last for years and you will keep finding new uses for them in your cleaning jobs!

GRIPLOC SUPER Magnet 8 Pack Carrier



This Griploc Magnet Carrier Holds 8 Pairs of Magnets.

SKU	QUANTITY PACKS
NN1110	1

GRIPLOC SUPER Magnet 12 Pack Carrier

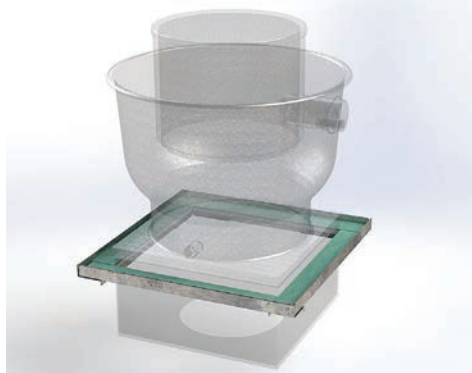


This Griploc Magnet Carrier Holds 12 Pairs of Magnets.

SKU	QUANTITY PACKS
NN1115	1



DRIPLOC DRIP EDGE 360 GREASE CONTAINMENT SYSTEM MODEL #1832



System provides 4" wide protection around the fan curb and utilizes the DRIPLOC SUPERWASH FILTER technology.

- Quick Install
- System fits fan curb sizes ranging from 18" to 32"
- Fire Retardant Top -Pre Filter Layer Material
- 1 - Fire Retardant Layer
- 4 - Oil Absorbing Layers

SKU	QUANTITY PACKS
BB1600	1, 2, 6, 12, 24

DRIPLOC DRIP EDGE 360 GREASE CONTAINMENT SYSTEM MODEL #3250



System provides 4" wide protection around the fan curb and utilizes the DRIPLOC SUPERWASH FILTER technology.

- Quick Install
- System fits fan curb sizes ranging from 32" to 50"
- Fire Retardant Top -Pre Filter Layer Material
- 1 - Fire Retardant Layer
- 4 - Oil Absorbing Layers

SKU	QUANTITY PACKS
BB1605	1, 2, 6, 12, 24

DRIPLOC DELUXE WALL MOUNT GREASE CONTAINMENT SYSTEM



This system is intended for use on wall mounted fan.

- Includes Oversized Deflector Pan
- 21" Wide x 34" Long Deflector Shield
- 7" Rack (with 2 Pillows) and Mounting Bracket

You will need to provide mounting hardware appropriate for the surface you're working with (Brick, Stucco, ect.) as each install is different.

SKU	QUANTITY PACKS
BB1700	1, 2, 3

DRIPLOC ECONO WALL MOUNT GREASE CONTAINMENT SYSTEM



Super affordable solution for wall mounted exhaust fans

- Install and services in minutes
- Includes four clips that screw into the lip of the fan bowl
- Custom manufactured grease filter (absorbent sock) fits inside the clips
- Includes one 10' absorbent grease sock.

SKU	QUANTITY PACKS
BB1800	1, 2, 4



STANDARD DRIPLOC STARTER PACK



DRIPLOC Starter Pack is a perfect economical way to be prepared for new customers.

- One 7" Rack System
- One 4" Rack System
- Two Hinge Kits (Type 1)
- Two Fan Access Clean Out Ports
- Two Bags of Spag

SKU	QUANTITY PACKS
BB1900	1, 2, 3

Econo "POL" Bracket Containment System

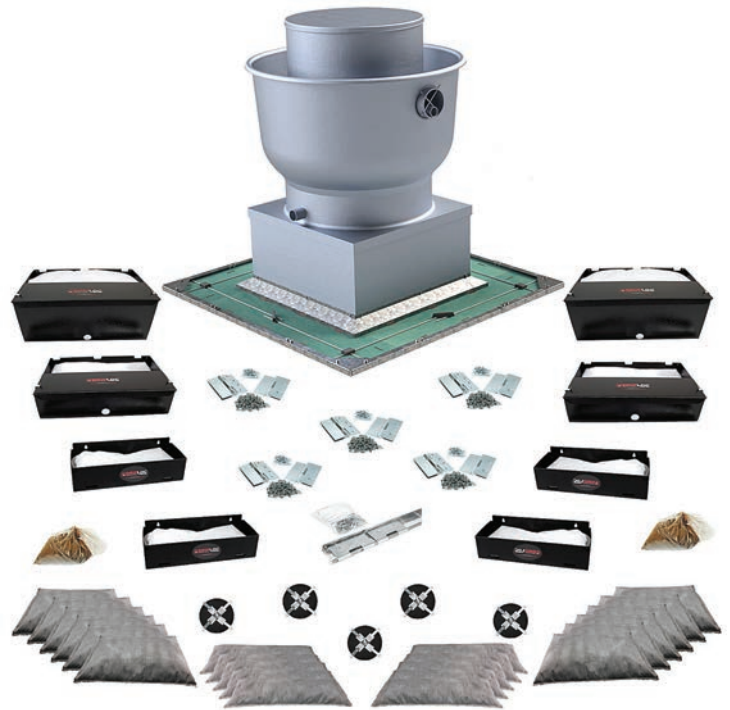


The Econo "Point of Leak" absorbent system for centralized area of containment. Just select rail size and purchase an absorbent sock to complete the system.

Rail sections are available in 18", 24", 30" & 36" lengths.

SKU	QUANTITY PACKS
BB2000	18" (1, 4), 24" (1, 4) 30" (1, 4) 36" (1, 4)

DRIPLOC DELUXE STARTER PACK



The Deluxe DRIPLOC Starter Pack is a perfect economical way to be prepared when taking on new customers and need a little "on hand" inventory.

****DRIPLOC Deluxe Starter Pack Includes****

- (2) 4" Rack Grease Containment System
- (2) 7" Rack Grease Containment System
- (4) LV Grease Containment System
- (1) RT 360 #4412 Grease Containment System
- (12) DRIPLOC Standard Replacement Filter
- (10) DRIPLOC LV Replacement Filter
- (5) Fan Access Panel
- (5) DRIPLOC Type #1 Hinge Kit
- (1) DRIPLOC Type #2 Hinge Kit
- (2) DRIPLOC Oil Absorbent Bags (3lbs. Each)

SKU	QUANTITY PACKS
BB1910	1

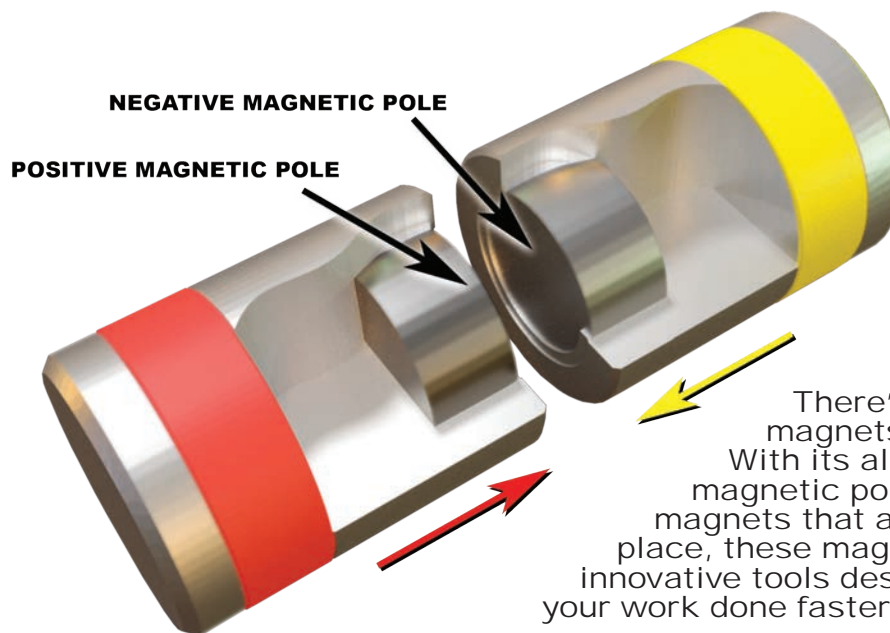
GRIPLOC SUPER MAGNETS

Your second pair of hands!



If you are hanging plastic from drop ceilings or securing plastic to hood vents or cooking equipment, GRIPLOC MAGNETS have the power to reach through stainless steel hoods and keep things where they need to be!

These are super strong rare-earth magnets with up to 75 pounds of pulling force. That's why they are designed with an aluminum casing around them to help you pull them apart and make them easy to use. Magnets are also subject to chipping when they snap together, so the aluminum casing helps protect the magnets themselves. These are more than just magnets. They are tools designed to be easy to use, protected for years of use, color-coded by magnetic polarity and there to help you work smarter, not harder.



There's more to a set of magnets than meets the eye. With its aluminum case, color-coded magnetic polarity and recessed magnets that are precision formed in place, these magnets are another set of innovative tools designed to help you get your work done faster and easier.



DRIPLOC HORIZONTAL DRAIN ADAPTER



- Designed to help direct grease into rack system.
- Connects to "U" shaped drain spout
- Made to allow PVC Hose connection for additional length (1-1/4" Diameter hose not included)
- Correct adapters are used to direct grease into center of containment systems

SKU	QUANTITY PACKS
DD1200	1, 5, 10

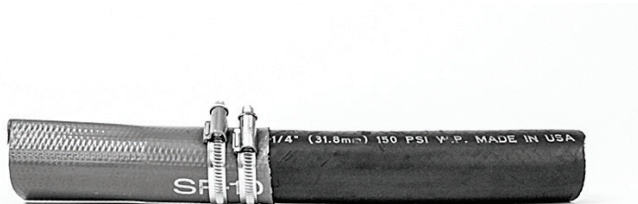
DRIPLOC VERTICAL DRAIN ADAPTER



- Designed to help direct grease into rack system.
- Connects to "U" shaped drain spout
- Made to allow PVC Hose connection for additional length (1-1/4" Diameter hose not included)
- Correct adapters are used to direct grease into center of containment systems

SKU	QUANTITY PACKS
DD1300	1, 5, 10

DRIPLOC PIPE DRAIN ADAPTER WITH HOSE



Designed to help direct grease into rack system. Connects directly to an enclosed drain spout.

- PVC Adapter with included Reducer
- Designed to direct grease past the fan base and into the grease containment system

SKU	QUANTITY PACKS
DD1400	1, 5, 10

DRIPLOC DEFLECTOR SHIELD

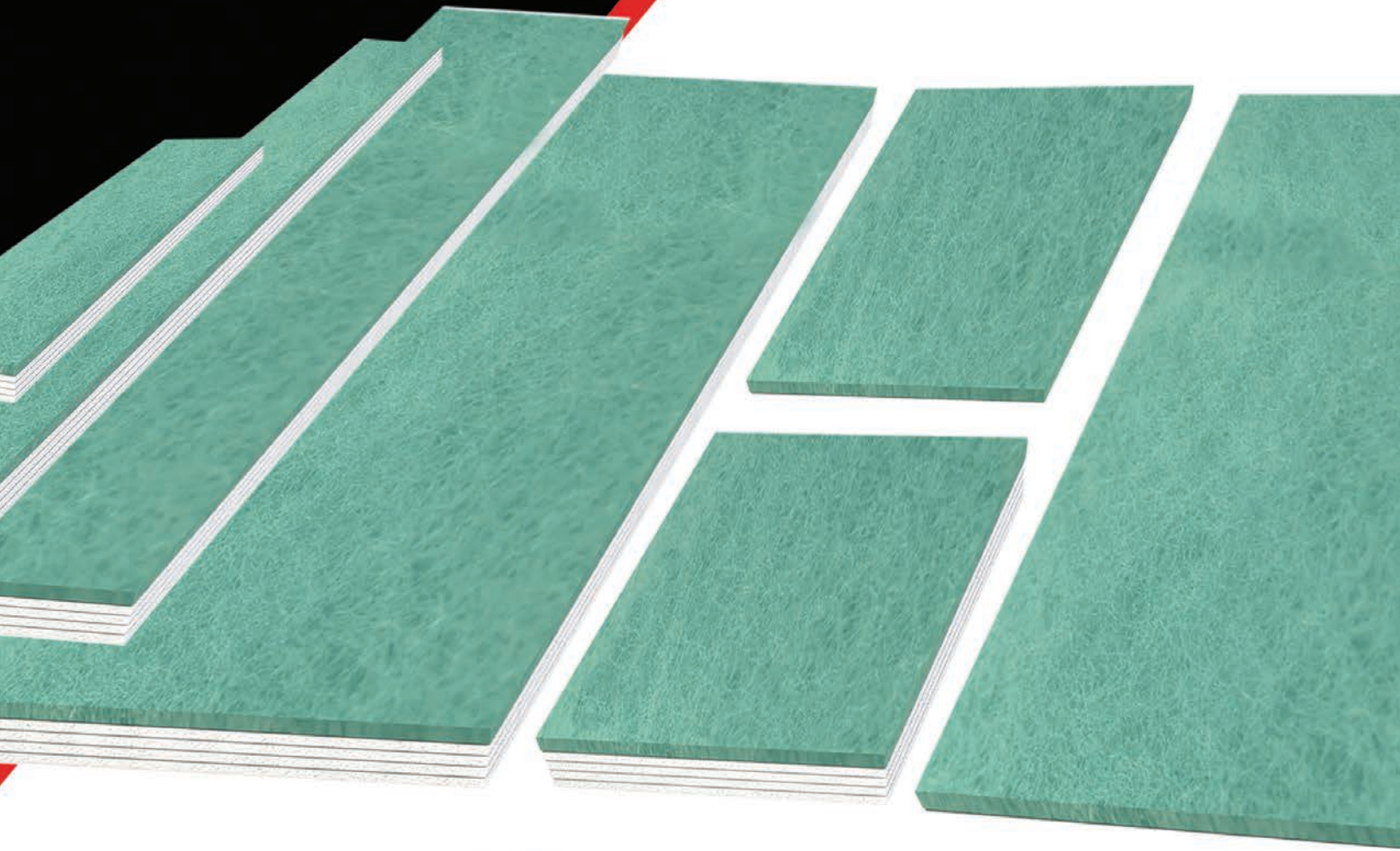


The Deflector Shield is used to adapt to various exhaust fans in the industry. For best results, grease should be directed to fall into the middle of the filter/pillow. The adapter allows grease to get past the fan base and into the grease containment system.

Each DRIPLOC Rack System comes with a Deflector Shield.

SKU	QUANTITY PACKS
DD1500	1, 5, 10

Replacement Filters





DRIPLOC Oil Only SPAG Pillow Standard Filter



DRIPLOC Oil Only Spag Pillow Standard Filter used with the 4" and 7" DRIPLOC rack systems.

- Non-leaching oil absorbent is perfect for catching and containing spills
- Absorbent pillows measure 17" x 23"

SKU	QUANTITY PACKS
CC1000	1, 2, 6, 12, 24, 48, 108, 216

DRIPLOC Oil Only POLY Pillow 13x20 Standard Filter



The DRIPLOC Oil Only Poly Pillow 13" x 20" Standard Filter is used with the DRIPLOC 4" and 7". Rack Systems. Non-leaching oil absorbent is perfect for catching and containing spills. The outer filter skin has excellent UV resistance allowing it to stay in the field for 12 months or longer.

SKU	QUANTITY PACKS
CC1015	1, 10, 30, 50, 100

DRIPLOC SUPERWASH Oil Only Poly 12" x 18" Standard Filter

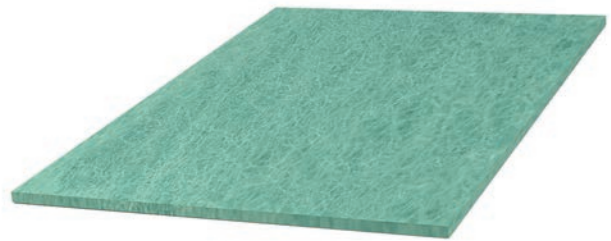


The DRIPLOC SUPERWASH Oil Only Filter works twice as hard as normal filters. The top green layer catches and holds grease in place daily as well as during routine cleanings and the multi-layer, oil only material locks in grease and oils while refusing water altogether.

- Fits both 4" & 7" DRIPLOC Rack Systems
- 12" x 18" filter
- 1 - Fire Retardant Layer
- 4 - Oil Absorbing Layers

SKU	QUANTITY PACKS
CC1025	1, 2, 5, 10, 50, 100, 200

DRIPLOC Standard Filter 12" x 18" Self-Extinguishing Topper



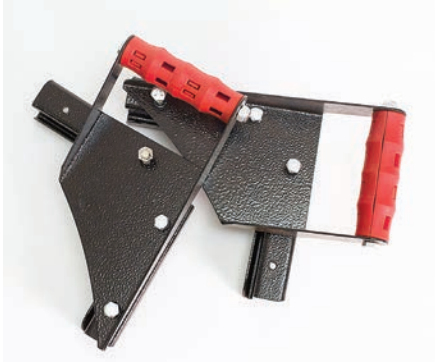
The Self-Extinguishing DRIPLOC Standard Filter Topper serves not only as a protective layer, but also acts as a disbursement layer that catches, holds, and then releases grease evenly into the oil absorbent layer.

- DRIPLOC Self-Extinguishing Standard Filter Topper
- Distributes grease evenly over oil absorbent layer
- 12" x 18" topper

SKU	QUANTITY PACKS
CC1050	50, 250, 500



DRIPLOC Exhaust Fan Safety Handle Set "1- Left / 1-Right"



The Exhaust Fan Lift Handle plays a vital role in the cleaning, servicing and fire inspection process. It provides a safe way to lift/close and access the inner fan and duct work without damaging the fan bowl and seals.

SKU	QUANTITY PACKS
JJ1600	1, 2, 5

DRIPLOC Exhaust Fan Hinge & Handle Kit "5 Sets of Each Per Case"

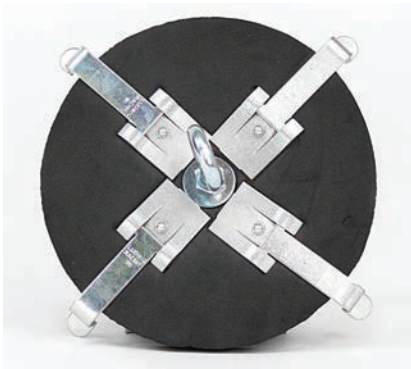


The Buddy Handles and DRIPLOC Hinge kits play a vital role in the cleaning, servicing and fire inspection process. They provide a safe way to lift/close and access the inner fan and duct work without damaging the fan bowl and seals. They also help prevent personal injury.

5 sets of handles and 5 Hinge kits

SKU	QUANTITY PACKS
JJ1700	1

DRIPLOC EXHAUST FAN ACCESS PANEL



You can't clean what you can't see! Get access to ensure you are cleaning the fan blades to code.

The Fan Access Panel installs in minutes.

Tools needed:

- 4" bi-metal hole saw
- metal file - to clean up the edges of cut hole

SKU	QUANTITY PACKS
LL1100	1, 4, 10, 30, 90

DRIPLOC ORIGINAL DRAIN ADAPTER



Used as a spout replacement for fans with no spout or missing spout.

- Flat sides form to fan base shape
- Includes mounting hardware
- Perfect adapter for use with DRIPLOC Pail Filter System

In some cases, hose extensions are needed.

SKU	QUANTITY PACKS
DD1100	1, 5, 10



DRIPLOC TYPE #1 FAN HINGE KIT



DRIPLOC Hinge Kits are easy to install on commercial kitchen exhaust fans. It only takes 10 minutes!

- Affordable hinge kit solution
- Includes hinges, chains, and mounting hardware
- Made from heavy-duty steel
- Will bring exhaust fans up to NFPA #96 Fire Code
- Prevents damage to exhaust fans and electrical wiring
- Easy access for total cleaning and inspection

SKU	QUANTITY PACKS
JJ1200	1, 5, 10, 50

DRIPLOC TYPE #2 EXHAUST FAN HINGE KIT FOR OFFSET FAN BASE



All DRIPLOC Hinge Kits are made from heavy-duty steel. They will last for years and support the weight of most any exhaust fan.

- Will bring exhaust fans up to NFPA #96 Fire Code
- Prevents damage to exhaust fan, roof and electrical wiring
- Allows easy access for total cleaning and inspection
- Affordable priced

SKU	QUANTITY PACKS
JJ1400	1, 3, 6, 40

DRIPLOC TYPE #2 EXHAUST FAN HINGE ADDITIONAL HINGE LEAF SET OF 2 WITH HARDWARE



- Designed to work with DRIPLOC Type #2 Exhaust Fan Hinge Kit for added support if needed
- Set of 2 Type #2 Hinge Leafs With Hardware kit
- This is not a full hinge kit

SKU	QUANTITY PACKS
JJ1410	1 pair

DRIPLOC - HINGE 3' SAFETY CHAIN



Safety chains are a must-have even if your existing hinge kit has a built-in stop. We've seen over and over what happens if the stop breaks and causes the fan to do a back flip! Add safety chains as a primary stop or as an added layer of protection.

(20 pack) 3' Length of double loop safety chain are included in this pack

SKU	QUANTITY PACKS
JJ1450	1



DRIPLOC Oil Only SPAG Pillow Low Volume Filter



DRIPLOC Filter used with the Low Volume DRIPLOC rack systems.

- Non-leaching oil absorbent is perfect for catching and containing spills
- Absorbent pillows measure 8" x 23".

SKU	QUANTITY PACKS
CC1100	1, 2, 6, 10, 30, 50, 100

DRIPLOC Oil Only POLY Pillow 8" X 20" Low Volume Filter



The DRIPLOC Oil Only Poly Pillow 8" x 20" Low Volume Filter is used with the DRIPLOC LV Systems but is an excellent choice when needing a filter for standard exhaust fan manufactured factory grease boxes. Non-leaching oil absorbent is perfect for catching and containing spills. The outer filter skin has excellent UV resistance, allowing it to stay in the field for 12 months or longer.

SKU	QUANTITY PACKS
CC1125	1, 2, 20, 40, 60, 100

DRIPLOC RT 360 System 24" X 58" Filter



24" X 58" Replacement Filter for DRIPLOC RT 360 Grease Containment System Model #4424.

- 1 - Fire Retardant Layer
- 4 - Oil Absorbing Layers

RESIDENTIAL SHIPPING SURCHARGE

SKU	QUANTITY PACKS
CC1200	1, 4, 8, 24

DRIPLOC RT 360 System 24" X 58" Self-Extinguishing Topper



The Self-Extinguishing DRIPLOC RT 360 System 24" X 58" Topper serves not only as a protective layer, but also acts as a disbursement layer that catches, holds, and then releases grease evenly into the oil absorbent layer. Fits DRIPLOC RT 360 Model #4424 as well as retrofits many other OEM systems.

DRIPLOC RT 360 System 24" X 58" Topper (Self-Extinguishing) Single Layer Green Mat.

RESIDENTIAL SHIPPING SURCHARGE

SKU	QUANTITY PACKS
CC1210	12, 24, 48



DRIPLOC RT 360 System 12" x 58" Filter



12" x 58" Replacement filter section for DRIPLOC RT 360 Grease Containment System Models #4412 & #3312

- 1 - Fire Retardant Layer
- 4 - Oil Absorbing Layers

RESIDENTIAL SHIPPING SURCHARGE

SKU	QUANTITY PACKS
CC1250	2, 8, 16, 48

DRIPLOC RT 360 System 12" x 58" Self-Extinguishing Topper



- DRIPLOC RT 360 System 12" x 58" Topper
- (Self-Extinguishing) Single Layer Green Mat.

RESIDENTIAL SHIPPING SURCHARGE

SKU	QUANTITY PACKS
CC1260	24, 48, 96

DRIPLOC DRIP EDGE 360 SYSTEM 4" x 54" FILTER



DRIPLOC DRIP EDGE 360 4" x 54" Replacement Filter section for DRIPLOC DRIP EDGE 360 Grease Containment System Models #1832 & #3250

- 1 - Fire Retardant Layer
- 4 - Oil Absorbing Layers

SKU	QUANTITY PACKS
CC1275	1, 4, 8, 24, 48, 96

DRIPLOC Gutter Style Oil Only Lay Flat Spag Filter



DRIPLOC Gutter Style Lay-Flat Filters for Grease Gutter Systems.

They are 8" x 40" long and are filled with our proprietary oil absorbent.

Due to size and low profile they work well as an excellent solution for a multitude of utility style fans or even as a rooftop system filter replacement.

SKU	QUANTITY PACKS
CC1300	1, 2, 4, 8, 16, 32, 72, 144

Hinges Handles & Adpters



When it comes to exhaust fans, DRIPLOC has a complete line of products to cover your needs.

Our hinge kits and lift handles are an excellent choice to help safely tip back the exhaust fan to gain access to ductwork during cleanings or inspections. Our fan access panels are a must-have to gain you the access needed to properly clean the entire fan blower wheel assembly. This ensures that they are clean and free of any excess weight from grease which decreases air movement and causes premature bearing wear and failure. Our custom manufactured drain adapters are used to properly channel all of the discharged grease flowing from the fan drain, directly into the grease containment system.



DRIPLOC T-SPRAY NOZZLE



Used for cleaning hard-to-reach track and plenum areas located in the kitchen vent hoods as well as other types of equipment.

SKU	QUANTITY PACKS
NN1300	1, 4, 8

DRIPLOC T-NOZZLE

- Attaches Easily To Wand Spray
- Top Filter Tracks
- Spray Plenum Areas
- Zero Spray Tip To Rip
- 15 Degree Spray To Swipe
- Work Safer From Ground
- Saves Time Guaranteed



O-RINGS - 1/4" - 12 PER PACKAGE



Viton O-Rings are ideal for replacing worn or damaged O-Rings in your power washer or quick coupler fittings. Viton rubber is compatible with temperatures up to 400F and is resistant to many chemicals and cleaners. Viton offers excellent tear and abrasion resistance while forming a perfect seal every time. Note: These O-Rings are designed for 1/4" Quick Couplers found on pressure washers.

SKU	QUANTITY PACKS
NN1325	1

O-RINGS - 3/8" - 12 PER PACKAGE



Viton O-Rings are ideal for replacing worn or damaged O-Rings in your power washer or quick coupler fittings. Viton rubber is compatible with temperatures up to 400F and is resistant to many chemicals and cleaners. Viton offers excellent tear and abrasion resistance while forming a perfect seal every time. Note: These O-Rings are designed for 3/8" Quick Couplers found on pressure washers.

SKU	QUANTITY PACKS
NN1350	1



DRIPLOC Supreme Oil Only Spag Filter



The DRIPLOC Supreme Filter is for use with DRIPLOC Supreme Grease Containment System. Each filter holds more than 6 lbs. of our DRIPLOC oil absorbent. Filter is 30" x 25".

SKU	QUANTITY PACKS
CC1600	1, 2, 4, 6, 12, 24, 36

DRIPLOC Oil Only Spag Pail Filter



The DRIPLOC Pail Filter System adapts to the grease drain found on many different styles and models of exhaust fans.

- Pail System filled with grease filtering media inside
- 16 drain holes allows water to pass through while filtering media captures grease inside
- Use for high volume applications

SKU	QUANTITY PACKS
CC1700	1, 2, 4, 8, 96

DRIPLOC Oil Only 3" X 9.5' SPAG Boom Sock



This 9.5' Wall Mount Filter (Absorbent Sock) is used inside the DRIPLOC Wall Mount Grease Containment Kit.

The Absorbent Sock fits into the four clips that screw into the lip of the fan. The grease is then encapsulated into the sock.

SKU	QUANTITY PACKS
CC1800	1, 2, 5

DRIPLOC Oil Only POLY Boom Filter 5" x 10'



The DRIPLOC Oil Only Boom Filter has a strong outer mesh that resists snags, while the inner sleeve is UV resistant up to 12 months. Absorbent boom links together and is great for absorbing low viscosity oil or fuel without absorbing water. Boom will float indefinitely when fully saturated. All booms are non-linting and come complete with end rings and snaps. Boom is 5" in diameter and 10' in length.

SKU	QUANTITY PACKS
CC1825	1, 4, 8



DRIPLOC Exhaust Fan Breather Port Filter QTY - 100



Contains leaks and absorbs grease from exhaust fan breather port.

- Non-intrusive-solution
- Highly effective at containing leaks around missing gaskets.
- Installs in seconds
- Works for months

* Case 100*

SKU	QUANTITY PACKS
CC1900	1

DRIPLOC Oil Only Absorbent Roll Mat - 24" x 150'



Heavy Duty 8 layer polypropylene mat is an excellent choice when replacing sections of Rooftop 360 Systems

- Our most cost-effective absorbent
- 8 layers of thermally bonded, 100% polypropylene
- Dimple pattern speeds wicking for faster, easier cleanup
- Highly absorbent, fine-fiber mat
- Absorbs oil and fuels - NOT water
- Easy-tear perforations

SKU	QUANTITY PACKS
CC2100	1



DRIPLOC high quality oil only absorbent solutions clean up spills on land or in water and are available in pillows, booms, mats and bulk bags.

We use an All-Natural, Non-Toxic oil absorbent material that is safe, efficient and great for cleaning heavy volumes of grease and oil. With an encapsulating rate of 500% to 600% of its own weight, the material has a much higher absorption capacity than other common absorbents.





1/8" Meg 0035 and 1503 Body Tips Set



Complete Set 1/8" Meg 0035 and 1503 Body Tips (Will Not fit in the 3" STINGER Duct Cleaner or STINGER Surface Cleaner models).

SKU	QUANTITY PACKS
AA1610	1

Stinger Duct Cart Mounting Bracket



Bracket is designed to attach your 3" or 6" DRIPLOC STINGER Duct Cleaner to your duct cart.

Simply swap out your existing mounting bracket with the STINGER bracket and attach with existing hardware.

SKU	QUANTITY PACKS
AA1700	1

Pressure Wash Hose- Single Wire Gray 50' Rough Skin, Non Marking 4000 psi 275 degree



- Single Wire Gray
- 50'
- Rough Skin
- Non Marking
- 4000 psi
- 275 degree

SKU	QUANTITY PACKS
AA1775	1, 4

Pressure Wash Hose- Double Wire Gray, 50' Rough Skin, Non Marking 6000 psi 275 degree



- Double Wire Gray
- 50'
- Rough Skin
- Non Marking
- 4000 psi
- 275 degree

SKU	QUANTITY PACKS
AA1780	1, 4



Mini Spinner Wash Arm 24"



The Mini Spinner 24" wash arm is a tough durable spray bar that is custom over curl bent to help eliminate overspray. The bar connects to any 1/4" NPT Male pipe fitting and the nozzle sizes are 1/8" FPT.

SKU	QUANTITY PACKS
AA1577	1

Mini Spinner Polyurethane Caster Wheel



The Mini Spinner caster wheel is a rubber wheel (Thermoplastic Gray Tread/Polypropylene Black Core) with load capacity of 275 lbs. Application usage: Good for food service, food processing, cafeteria, restaurant, kitchen medical hospital pharmaceutical, general purpose, and industrial applications.

SKU	QUANTITY PACKS
AA1580	1, 4

STINGER Stainless Steel Surface Cleaner Swivel 1/4" F X 1/4" M

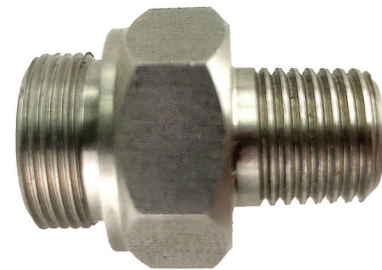


The STINGER 1/4" X 1/4" Swivel is one of the most Durable swivels available today. Its aluminum case with stainless steel core makes it light weight, but also extremely durable.

- Swivel has 1/4" female inlet and a 1/4" male outlet
- Operating Limits 100-300
- RPM 250-5000
- PSI 3-6
- GPM 33-210F

SKU	QUANTITY PACKS
AA1600	1

STINGER Stainless Steel Surface Cleaner Swivel 1/4" Male Adapter Nut



The STINGER 1/4" Male Adapter Swivel nut is used when needing to adapt the swivel to any 1/4" female NPT rotary union. Made in the USA of quality stainless steel makes it a tough, long-lasting component that can be used for years to come.

SKU	QUANTITY PACKS
AA1605	1



STINGER

ROTARY CLEANING HEADS

Manufactured by DRIPLOC





STINGER 6" VARIABLE SPEED DUCT CLEANER



- Variable Speed Control
- Deeper, more effective cleaning
- Protects bearings for longer life
- Protects seals

SKU	QUANTITY PACKS
AA1100	1

STINGER 6" VARIABLE SPEED DUCT CLEANER WITH 20FT HOSE & QUICK CONNECT



- Pre-assembled with a double-wire 20' hose
- In-line quick coupler
- Variable Speed Control
- Deeper, more effective cleaning
- Protects bearings for longer life
- Protects seals

SKU	QUANTITY PACKS
AA1110	1

STINGER 6" VARIABLE SPEED DUCT CLEANER REPLACEMENT HEAD



Kit comes ready to attach to your STINGER Swivel.

Includes new upper and lower high pressure water seal. Head will fit into existing 6" duct spinner baskets/cages with standard 1/8" low profile spray tips.

SKU	QUANTITY PACKS
AA1120	1

STINGER 6" VARIABLE SPEED DUCT CLEANER CAGE



The STINGER cage design makes working on your duct cleaner a snap, the uniquely designed mounting plate allows the cleaner head to pass through quickly and easily giving you full access to the spray head and wash arms. Cage is made of 304 Stainless Steel.

SKU	QUANTITY PACKS
AA1130	1



QUICK CONNECT IN-LINE FILTER 1/4" M X 1/4" QC



- General Pump 100560 In-line High-Pressure Filter & Quick Disconnect
- 100 mesh screen, 416 stainless steel
- Maximum 8 gpm
- Maximum 5,500 PSI
- Maximum temp 200°F
- Inlet connection is 1/4" QD
- Outlet connection is 1/4" NPT-M

SKU	QUANTITY PACKS
AA1410	1

20FT STIFF DOUBLE WIRE HOSE WITH IN-LINE SCREEN QUICK CONNECT



- 20' double wire hose with in-line screen quick connect
- Pressure stiffens hose allowing for push rod effect.
- Perfect for maneuvering through vertical and horizontal ducts

SKU	QUANTITY PACKS
AA1420	1

MINI SPINNER SURFACE CLEANER 16"



The Mini Spinner 16" Surface Cleaner attaches to your existing trigger wand via quick coupler.

- Solid steel deck for durability
- All welded body
- Perfect for hard to reach areas
- Operating Limits 100-300 RPM 250-5000 PSI 3-6 GPM 33-210F

SKU	QUANTITY PACKS
AA1500	1

MINI SPINNER WASH ARM 16"



The Mini Spinner 16" wash arm is a tough durable spray bar that is custom over curl bent to help eliminate overspray. The bar connects to any 1/4" NPT Male pipe fitting and the nozzle sizes are 1/8" FPT.

SKU	QUANTITY PACKS
AA1575	1



STINGER DUCT CLEANER HEAD BANJO BOLT KIT



Redesigned STINGER bolts with a taller head, allowing for a better grip to ensure the bolts stay tight.

STINGER Duct Cleaner Head Banjo Bolt Kit 2 Bolts and 4 Cooper Washers.

SKU	QUANTITY PACKS
AA1325	1

STINGER DUCT CLEANER COPPER WASHER



Copper Crush Washer for adjustable arm duct cleaners.

Fit both STINGER brand heads as well as other heads.

SKU	QUANTITY PACKS
AA1330	1

STINGER SWIVEL SS LONG REBUILD KIT

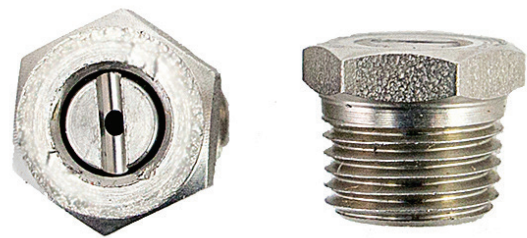


- Stainless steel shaft and bearing assembly
- Both upper and lower carbide nozzles
- New stainless steel nozzle adapter housing

Check STINGER Swivel Parts Identifier PDF to help identify all internal swivel parts.

SKU	QUANTITY PACKS
AA1350	1

STINGER DUCT CLEANER LOW PROFILE STAINLESS STEEL 1/8" NOZZLE

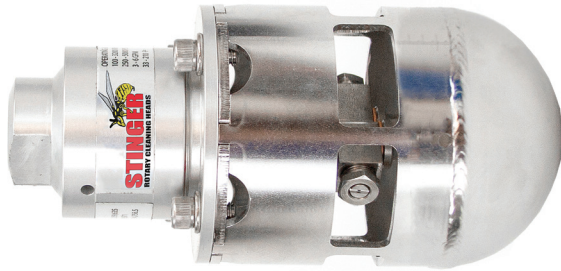


- Includes 2 nozzles (1- #1503 1- #0003)
- Nozzles are low profile 1/8" body tips that are used in duct spinner cleaning heads as well as certain surface cleaner spray bars
- These low profile nozzles must be used in all 3" duct spinners to clear cage/basket walls

SKU	QUANTITY PACKS
AA1400	1



STINGER 3" VARIABLE SPEED DUCT CLEANER



- Variable Speed Control
- Deeper, more effective cleaning
- Protects bearings for longer life
- Protects seals

SKU	QUANTITY PACKS
AA1200	1

STINGER 3" VARIABLE SPEED DUCT SPRAY TIP



Pre-assembled duct cleaner with a stainless steel in-line quick coupler. Just-quick couple the head to the end of your wand and effectively clean all the hard to reach areas in the vent hood tracks and plenums.

SKU	QUANTITY PACKS
AA1205	1

STINGER 3" VARIABLE SPEED DUCT CLEANER WITH 20' HOSE & QUICK CONNECT



The 3" Variable Speed Control STINGER Duct Cleaner with 20' hose and quick connect. Tips included.

SKU	QUANTITY PACKS
AA1210	1

STINGER 3" VARIABLE SPEED DUCT CLEANER REPLACEMENT HEAD



Comes complete and ready to attach to your STINGER swivel.

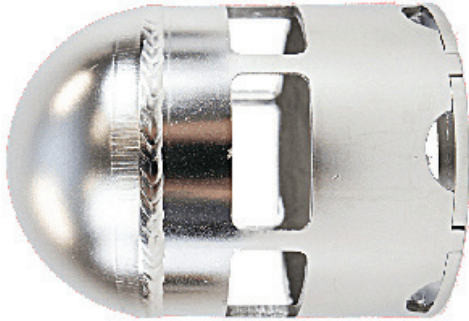
Includes new upper and lower high pressure water seals. Head will fit into existing 3" duct spinner baskets/cages but

MUST USE LOW PROFILE 1/8" BODY SPRAY TIPS.

SKU	QUANTITY PACKS
AA1220	1



STINGER 3" VARIABLE SPEED DUCT CLEANER CAGE



The STINGER cage design makes working on your duct cleaner a snap. The uniquely designed mounting plate allows the cleaner head to pass through quickly and easily giving you full access to the spray head and wash arms.

SKU	QUANTITY PACKS
AA1230	1

STINGER HEAD SPEED SETTER TOOL



This tool makes adjusting the pitch of your wash arm a snap. Has built-in head stop as well as adjustable wash arm stop so you will get a consistent setting every time.

SKU	QUANTITY PACKS
AA1250	1, 2, 6

STINGER STAINLESS STEEL DUCT SPINNER SWIVEL



The STINGER swivel is one of the most durable swivels available today. Its aluminum case with stainless steel core makes it light weight but also extremely durable.

Operating Limits:

- 100-300 RPM
- 250-5000 PSI
- 3-6 GPM
- 33-210F

SKU	QUANTITY PACKS
AA1300	1

STINGER SWIVEL SEAL REPLACEMENT KIT



Replacement Seal/Nozzle kit that fits both the 3/8" & 1/4" model STINGER swivel.

SKU	QUANTITY PACKS
AA1310	1



STINGER SWIVEL REPLACEMENT BEARING KIT



Replacement Bearing Kit that fits both the 3/8" & 1/4" model STINGER swivel.

SKU	QUANTITY PACKS
AA1320	1

STINGER WASH ARM HEAD



STINGER Wash Arm Head

SKU	QUANTITY PACKS
AA1321	1

STINGER 3" WASH ARM SET



STINGER 3" Wash Arm Set

SKU	QUANTITY PACKS
AA1322	1

STINGER 6" Wash Arm Set



STINGER 6" Wash Arm Set

SKU	QUANTITY PACKS
AA1323	1

DRIPLOC LLC
4100 Will Rogers Parkway
Ste #1000
Oklahoma City, OK 73108

BUY DIRECT | FREE SHIPPING | CUSTOM FLYERS



Join us on social media at:



Facebook:
DRIPLOC



Twitter:
DRIPLOCInc



LinkedIn:
DRIPLOC



YouTube:
DRIPLOC

www.driploc.com

877-374-7562