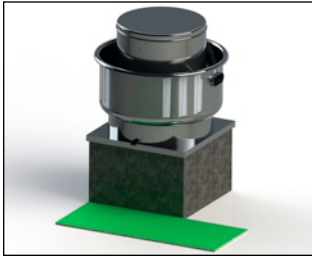
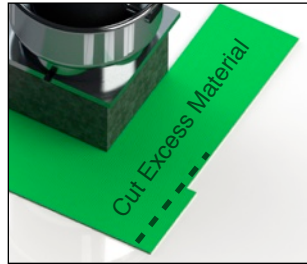


RT 360 SYSTEM INSTALL INSTRUCTIONS - MODELS 4412,4424,3312

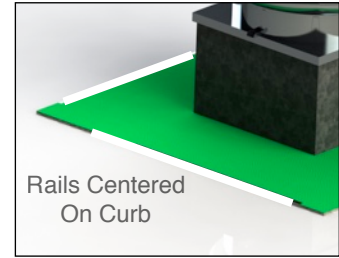
Caution: Use gloves as metal edges can be sharp-Do not cut material directly on roof -Wear eye protection



Place 1st filter at left edge of fan base as shown.



Repeat step on all 4 sides then cut excess with shears.

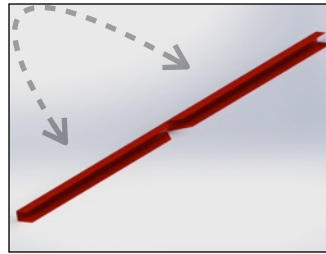


Rails Centered On Curb

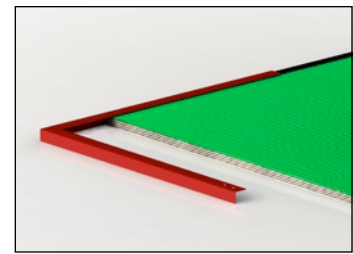
Lay straight rail sections out on all 4 sides centering them with the fan curb.



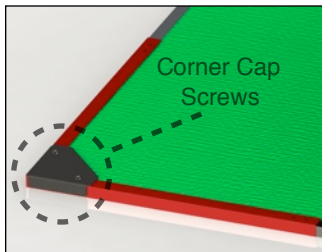
Slip material into the jaw section of the rail. **Tip:** Start with one corner and work your way across tucking small section at a time.



Identify corner rail section (middle section is removed for field bending). Fold gently, piece will stop bending when it reaches 90 degrees.



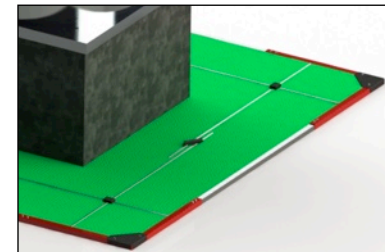
Place corner section noting it will cover both filter material as well as straight rail sections. Should naturally fit to complete a square corner.



Place Corner Cap on each corner and secure with the provided 3/8" self tap screws.



Finish frame assembly by screwing corners to rails with provided 3/8" self tap screws.



Position hold down rods in recommended grid pattern as shown and secure with neoprene holders provided.

SUGGESTED HOLDING ROD PATTERNS

Crossing Grid Pattern

NOTE: Neoprene gasket will form to make corner as well as straight connecting rod holder.

Cornering Pattern

Position rods on the system so that they are at a 45 degree angle, slipping them between the filter and metal frame to trap material in place